

Light efficiency:

52 Lumen/Watt

Light quality:

CRI: 95.7

Color temperature:

5790 K

Output: 16978 lm

Peak: 238586 cd

Power: 325.1 W

PF: 0.99



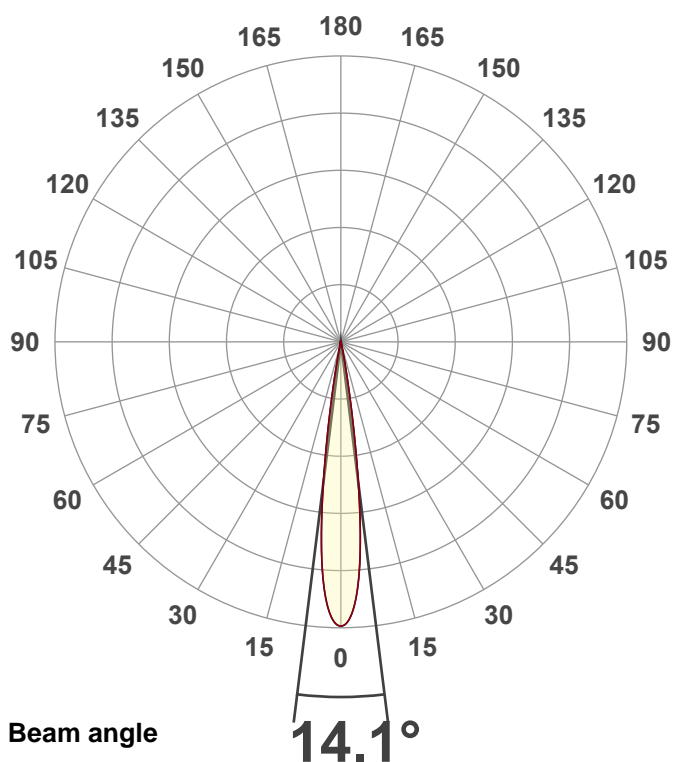
Product name:

PAR Z300 6K (Zoom 25°, Full On)

Item number:

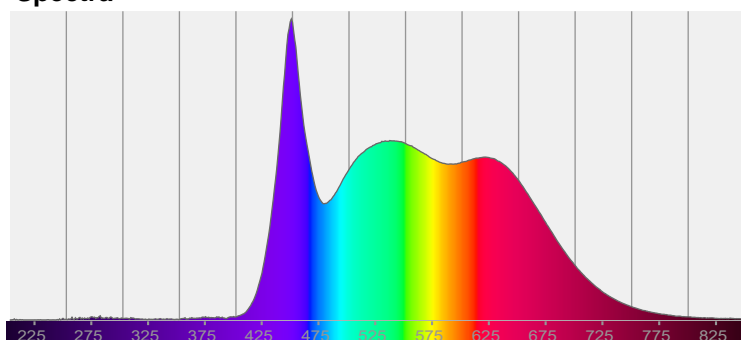
Date and time:

8/18/2025 8:36:45 AM

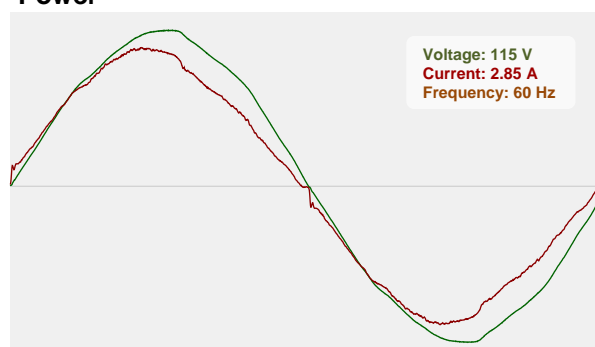


CIE 1931
x: 0.326
y: 0.335

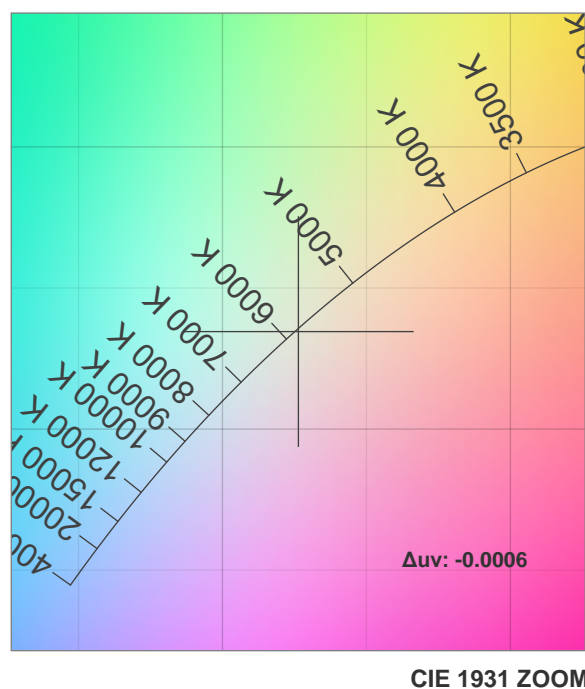
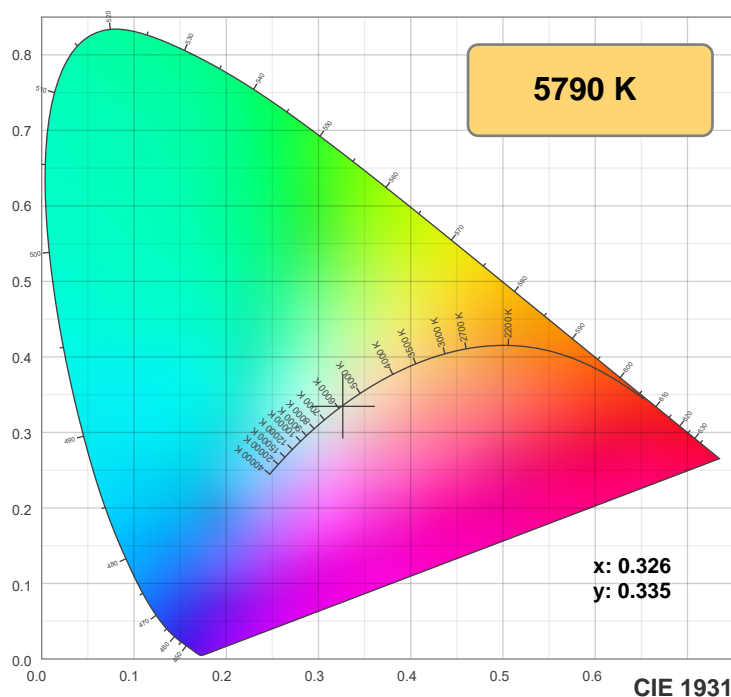
Spectra



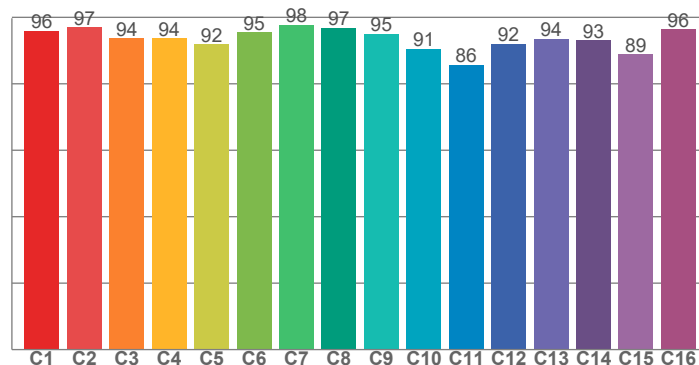
Power



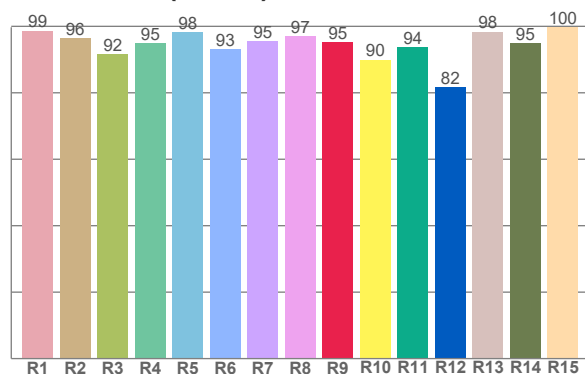
Color details



TM-30: 93.4



CRI: 95.7 (R1-R8)



CRI R values, only R1-R8 are used to calculate final CRI value

R1	R2	R3	R4	R5	R6	R7	R8	R9	R10	R11	R12	R13	R14	R15
98.7	96.3	91.7	94.8	98.3	93.2	95.5	97.0	95.3	89.9	93.8	81.8	98.4	95.0	99.7

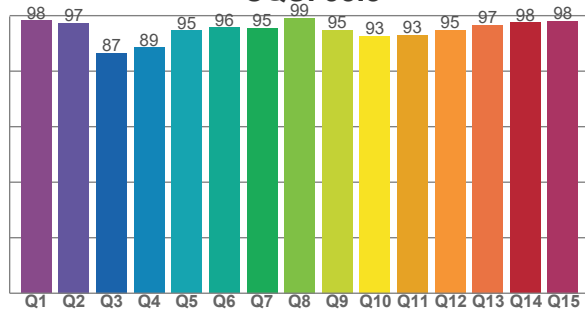
TM30 C values, 16 binned values out of total of 99 C values

C1	C2	C3	C4	C5	C6	C7	C8	C9	C10	C11	C12	C13	C14	C15	C16
96.0	97.0	93.6	93.8	91.9	95.4	97.8	96.9	95.0	90.5	85.7	92.0	93.5	93.0	88.8	96.4

CQS Q values

Q1	Q2	Q3	Q4	Q5	Q6	Q7	Q8	Q9	Q10	Q11	Q12	Q13	Q14	Q15
98.3	97.3	86.5	88.5	94.7	95.7	95.5	99.1	94.8	92.6	93.1	94.8	96.7	97.5	98.0

CQS: 93.8



Color parameters

Color temperature	Color rendering index	Red component	Color fidelity	Color gamut	Color quality scale	Color coordinate cie 1931	Color coordinate cie 1931	Color coordinate	Color coordinate	Color deviation from black body
CCT	CRI	CRI R9	TM30 Rf	TM30 Rg	CQS	x	y	u	v	Δuv
5790 K	95.7	95.3	93.4	102.6	93.8	0.326	0.335	0.205	0.316	-0.0006

TM-30 details

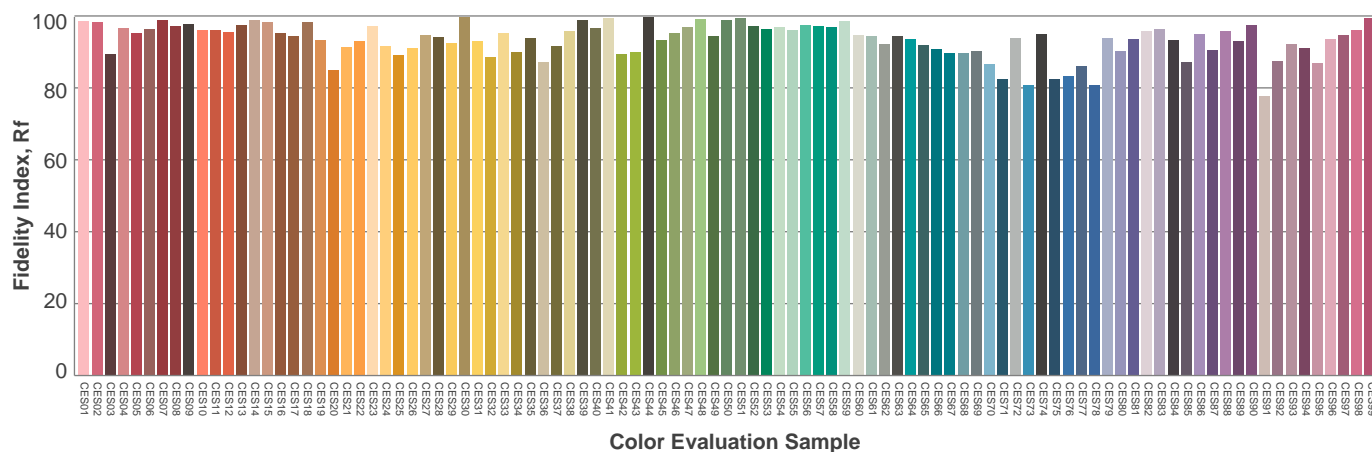
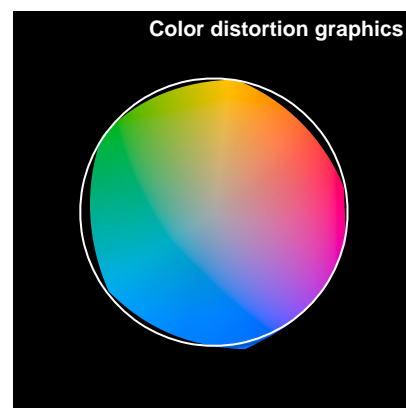
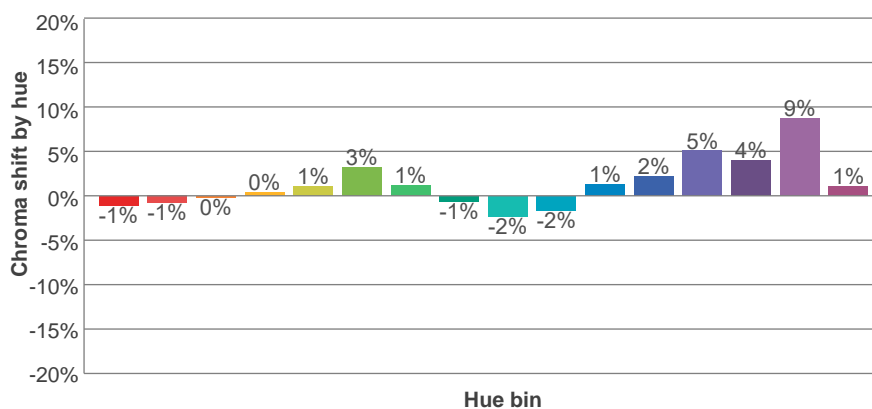
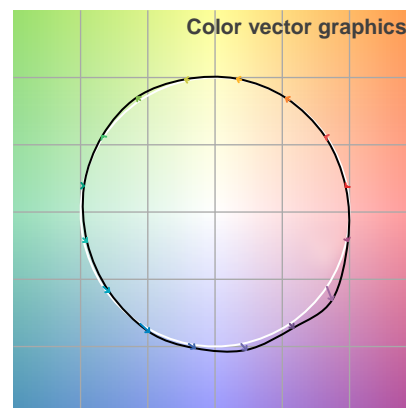
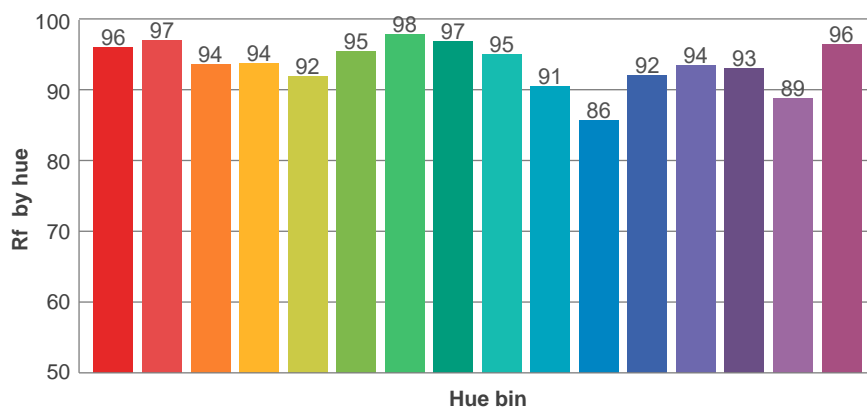
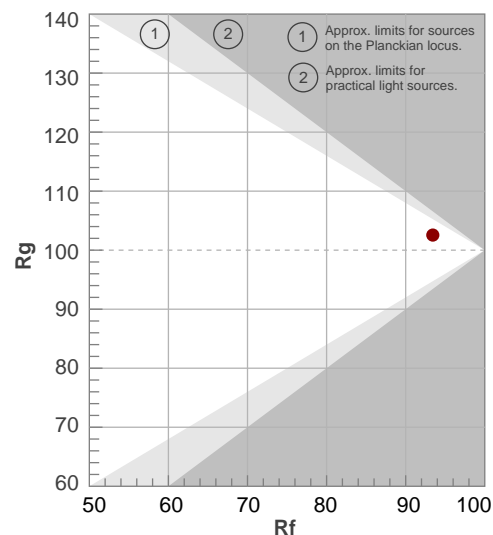
Rf 93.4

Fidelity index Rf

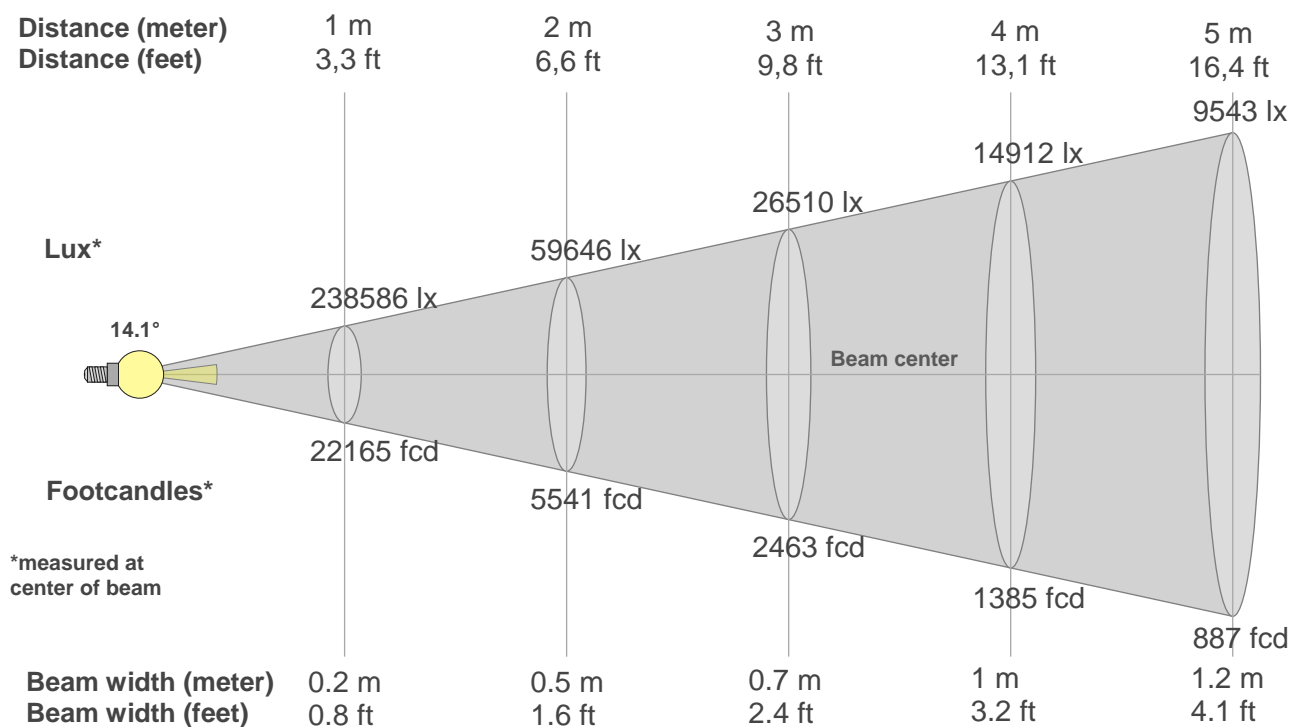
Rg 102.6

Gamut index Rg

Hue Bin	Ri	Shifts (%)	
		Chroma	Hue
1	96	-1%	-1%
2	97	-1%	1%
3	94	0%	3%
4	94	0%	3%
5	92	1%	3%
6	95	3%	1%
7	98	1%	-1%
8	97	-1%	0%
9	95	-2%	3%
10	91	-2%	6%
11	86	1%	9%
12	92	2%	5%
13	94	5%	3%
14	93	4%	1%
15	89	9%	-6%
16	96	1%	-2%



Beam details



Beam intensities from 1-20m

1m	2m	3m	4m	5m	6m	7m	8m	9m	10m	11m	12m	13m	14m	15m	16m	17m	18m	19m	20m
3.3ft	6.6ft	9.8ft	13.1ft	16.4ft	19.7ft	23ft	26.2ft	29.5ft	32.8ft	36.1ft	39.4ft	42.7ft	45.9ft	49.2ft	52.5ft	55.8ft	59.1ft	62.3ft	65.6ft
238586lx	59646lx	26510lx	14912lx	9543lx	6627lx	4869lx	3728lx	2946lx	2386lx	1972lx	1657lx	1412lx	1217lx	1060lx	932lx	826lx	736lx	661lx	596lx
22165.3 fcd	5541.3 fcd	2462.8 fcd	1385.3 fcd	886.6 fcd	615.7 fcd	452.4 fcd	346.3 fcd	273.6 fcd	221.7 fcd	183.2 fcd	153.9 fcd	131.2 fcd	113.1 fcd	98.5 fcd	86.6 fcd	76.7 fcd	68.4 fcd	61.4 fcd	55.4 fcd

Intensities in 0° c-plane

0°	1°	2°	3°	4°	5°	6°	7°	8°	9°	10°	11°	12°	13°	14°	15°	16°	17°	18°	19°
239k	237k	231k	221k	205k	183k	155k	122k	86k	55k	31k	16k	7k	3k	2k	1k	1k	1k	1k	0k
100%	99%	97%	92%	86%	77%	65%	51%	36%	23%	13%	7%	3%	1%	1%	0%	0%	0%	0%	0%

Intensities in 90° c-plane

0°	1°	2°	3°	4°	5°	6°	7°	8°	9°	10°	11°	12°	13°	14°	15°	16°	17°	18°	19°
239k	237k	231k	221k	205k	183k	155k	122k	86k	55k	31k	16k	7k	3k	2k	1k	1k	1k	1k	0k
100%	99%	97%	92%	86%	77%	65%	51%	36%	23%	13%	7%	3%	1%	1%	0%	0%	0%	0%	0%

Intensities in 180° c-plane

0°	1°	2°	3°	4°	5°	6°	7°	8°	9°	10°	11°	12°	13°	14°	15°	16°	17°	18°	19°
239k	237k	231k	221k	205k	183k	155k	122k	86k	55k	31k	16k	7k	3k	2k	1k	1k	1k	1k	0k
100%	99%	97%	92%	86%	77%	65%	51%	36%	23%	13%	7%	3%	1%	1%	0%	0%	0%	0%	0%

Intensities in 270° c-plane

0°	1°	2°	3°	4°	5°	6°	7°	8°	9°	10°	11°	12°	13°	14°	15°	16°	17°	18°	19°
239k	237k	231k	221k	205k	183k	155k	122k	86k	55k	31k	16k	7k	3k	2k	1k	1k	1k	1k	0k
100%	99%	97%	92%	86%	77%	65%	51%	36%	23%	13%	7%	3%	1%	1%	0%	0%	0%	0%	0%

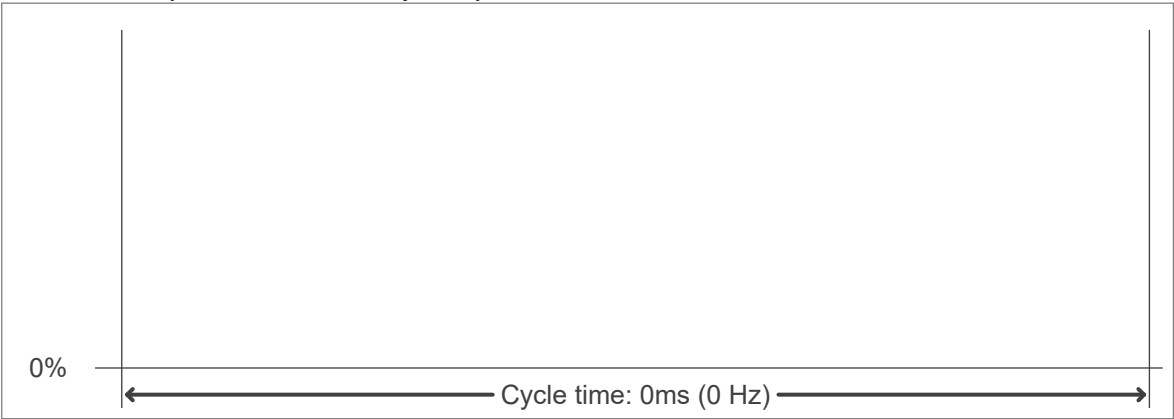
Beam angle 50%	Field angle 10%	Cutoff angle 2,5%	Intensity ratio in 120° cone	Intensity ratio in 90° cone
14.1°	20.8°	24.5°	82.7%	79.9%



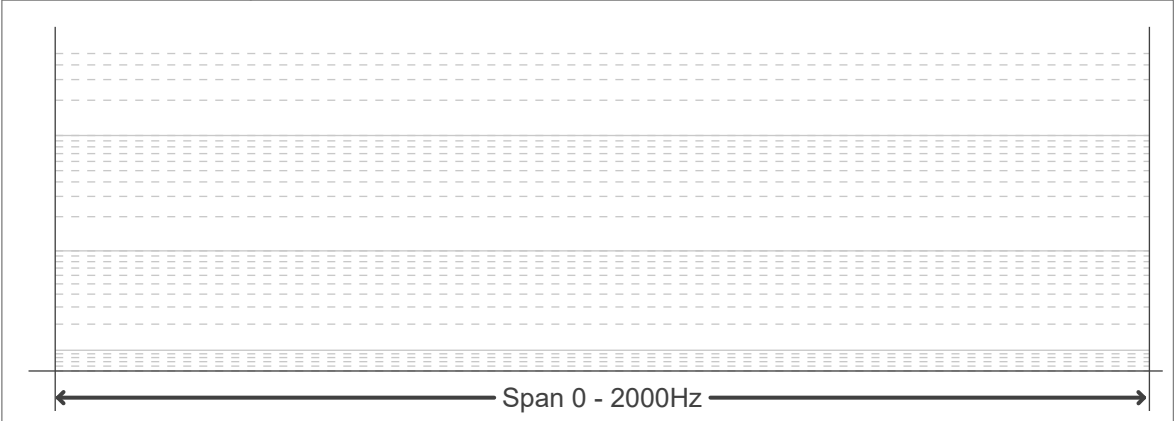
Flicker curve (complete sampled flicker signal)



Flicker frame (frame of one flicker period)



Flicker FFT (frequency scope of flicker curve)



Flicker results:

Flicker frequency:		n/a Hz	
Flicker index:	n/a	JA8/10 40Hz	n/a %
Flicker percentage:	n/a %	JA8/10 90Hz	n/a %
SVM: (Visual flicker)	n/a	JA8/10 200Hz	n/a %
PstLM	n/a	JA8/10 400Hz	n/a %
Mp	n/a	JA8/10 1000Hz	n/a %

Flicker conditions:

Sample rate:	n/a samples/second
--------------	--------------------